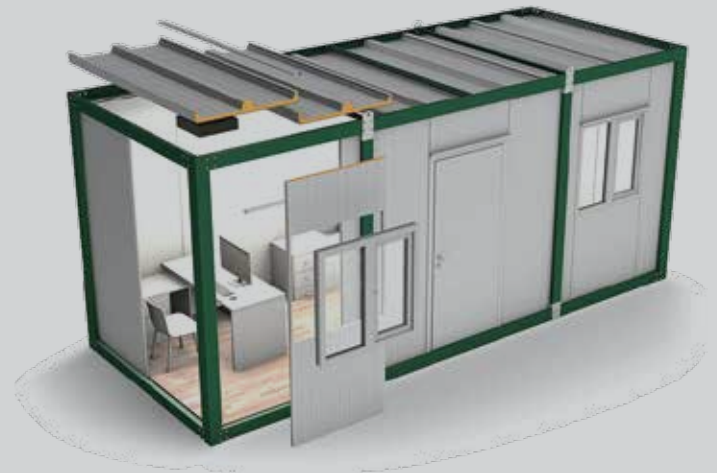


Building Future with Nature in Mind.

Smart & Green Prefabrik Moduler Yapı San. ve Tic. Ltd. Şti.

SG300 SERIES

3,00 x 7,00m
Life Containers



SG 304

Technical Specifications

Length	: 7.00m	Plumbing	: Above the Plaster
Width	: 3.00m	Exterior Door	: Insulated Sheet Door
Height	: 2.60m	Windows	: White Color PVC Window
Total Area	: 21m ²	Electrical Installation	: Above the Plaster
Interior Wall	: 40mm Sandwich Panel	Exterior Door Paint	: Electrostatic Painted Galvanized Sheet
Exterior Wall	: 40mm Sandwich Panel	Equipment	: TSE Certified Kitchen and Bathroom
Interior Door	: American Press Door	Furniture	: Laminated MDF countertop
Load Carrying Capacity : 200 kg/m ²			



6.00m

1.14m

4.86m



2.40m

2,74m²11,66m²

SG 300 SERIES

General Technical Specifications

PRODUCTION METHOD	<ul style="list-style-type: none"> Production is being made only by using high quality galvanized steel The main structure is being formed by the C and U profiles which was produced by rollform and hydraulic press machines. All products are being delivered to site unassembled and whole construction is being designed to ensure easy and rapid assembly.
PACKING SYSTEM	<ul style="list-style-type: none"> Flatpack packing system designed to ship the S&G's container systems. All of the connection details designed using bolts and nuts with special locking mechanism. All components of the container such as wall panels, doors, windows, and electric & sanitary installations are placed inside each flatpack unit.
LIFTING SYSTEM	<ul style="list-style-type: none"> Containers are designed to lift individually. There are 4 eyebolts are placed on the top of each unit for lifting purposes. Please make sure the eyebolts are assembled correctly and safety ropes are distributed evenly before lifting Containers must be empty before lifting and all job safety measures must be strictly followed PPE must be worn at all times and while the container is lifted no one will remain underneath the unit.
TECHNICAL FEATURES	<ul style="list-style-type: none"> Chasis Load Capacity : 200 kg/m² Wind Speed : 80 km/h Snow Load : 80 kg/m² Earthquake condition : 1st Degree Positioning : The container must be placed on a flat surface
FLOOR STRUCTURE	<ul style="list-style-type: none"> Method : Specially designed C and U profiles produced using high quality galvanised steel Covering : 14mm thick cement board covered with 2mm thick patterned high traffic vinyl Floor Thermal Conductivity Coefficient : K: 2,97 Kcal/m² hC
WALLS	<ul style="list-style-type: none"> Total External Height : 2700 mm Interior Net Height : 2500 mm Thickness : 40 mm Insulation : Polyurethane 40m³ External Surface Covering : Ral 9002 painted 0,30 mm thick corrugated steel sheet Internal Surface Covering : Ral 9002 painted 0,30 mm thick corrugated steel sheet Thermal conductivity coefficient: K: 0,58 Kcal/m²hC
ROOF CHASIS	<ul style="list-style-type: none"> Roof Thermal conductivity coefficient : K: 0,47 Kcal/m²hC Roof Construction : Specially designed C and U profiles produced using high quality galvanised steel Roof Covering : 40 mm thick, 3 ribs Sandwich Panel Panel Outer Surface : RAL 9002 painted Galvanized steel sheet Panel Inner Surface : RAL 9002 painted Galvanized steel sheet Insulation : Polyurethane 40 kg/m³ Rain waters are evacuated by the holes in the top frame
EXTERNAL DOOR	<ul style="list-style-type: none"> Description : RAL9002 painted Galvanized steel sheet industrial door Insulation : EPS Dimensions : 880x1960mm Steel Chasis thickness is 1,2 mm Door lock & Handle : Cylinder type lock, Handle is grey color, TSE certified
WINDOWS	<ul style="list-style-type: none"> External Windows : 1000x1000 mm Double glazed PVC External Windows Handles : PVC
ELECTRIC INSTALLATION	<ul style="list-style-type: none"> Method : On the plaster Plug and Switches : TSE Certified, Located in every room Lighting : LED lightnings, TSE Certified Cables : TSE Certified, Located in every room
SANITARY INSTALLATION	<ul style="list-style-type: none"> Method : On the plaster Toilet Bowls : TSE Certified Ceramic toilet bowls with PVC flush tank Handwashing Basin : TSE Certified Ceramic Handwash basin Pipes : TSE Certified PVC clear and grey water piping system Shower Tray : Fiberglass specially designed square shower tray Fixtures : TSE Certified Fixtures



S&G Prefab keeps the right to change the specs

SG PREFABRİK MODÜLER YAPI SİS. SAN. VE TİC. LTD. ŞTİ

Merkez | Head Office

: Küçükbakkalköy Mh. Derebey Sk.
Dumankaya Flex Residence No:13/50
Ataşehir / İstanbul / Türkiye

Fabrika | Factory

: Çevrik Mh. 162. Sk. Sermed Sit. No:7
Cumayeri / Düzce / Türkiye

sgprefab.com | +90 216 510 23 20 | info@sgprefab.com

