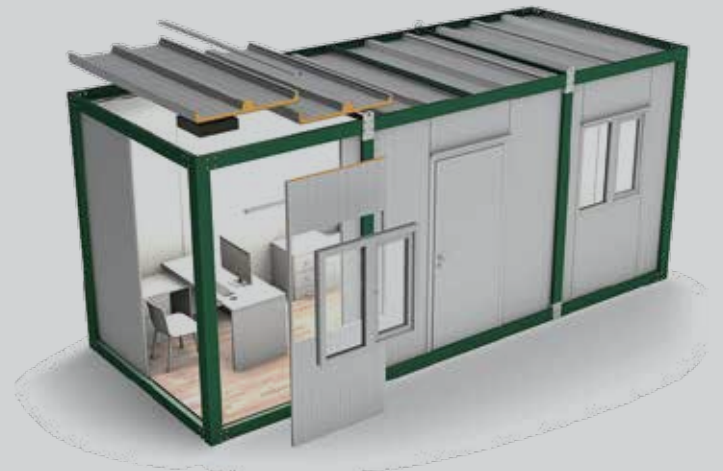


# Building Future with Nature in Mind.

Smart & Green Prefabrik Moduler Yapı San. ve Tic. Ltd. Şti.

## SG200 SERIES

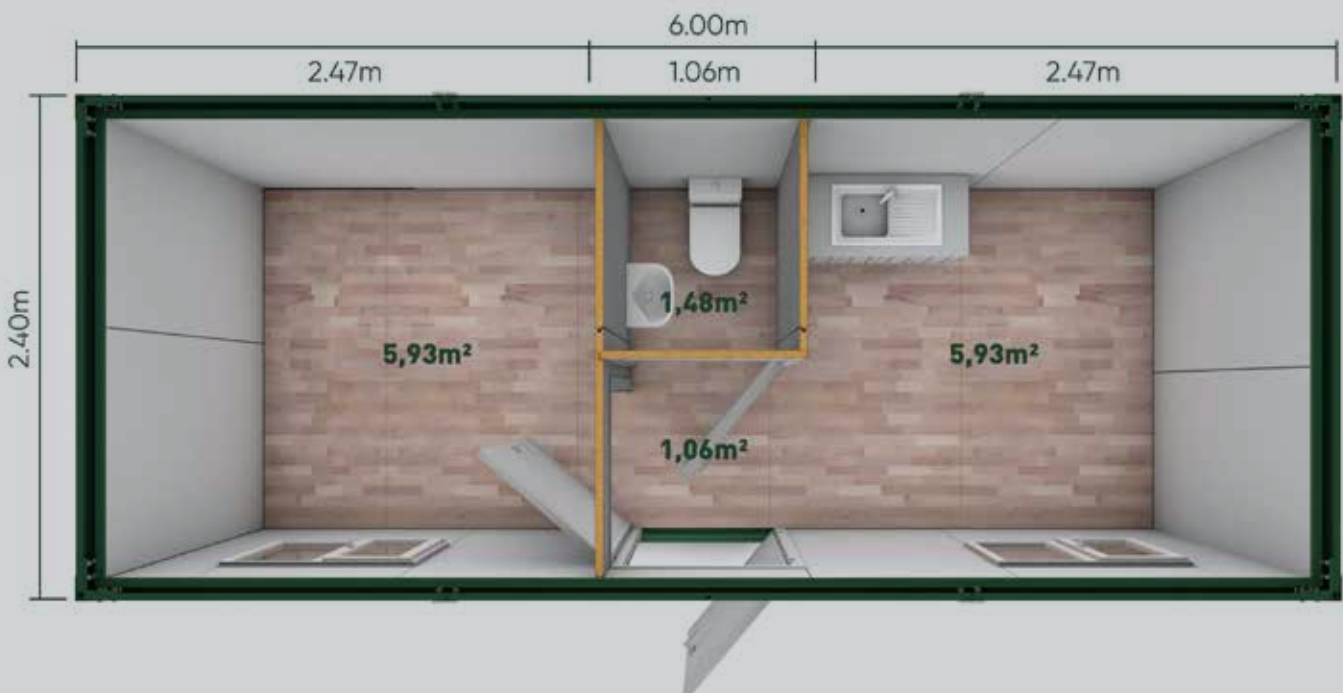
2,40 x 6,00m  
Life Containers



# SG 213

## Technical Specifications

Length	: 6.00m	Plumbing	: Above the Plaster
Width	: 2.40m	Exterior Door	: Insulated Sheet Door
Height	: 2.60m	Windows	: White Color PVC Window
Total Area	: 14.4m <sup>2</sup>	Electrical Installation	: Above the Plaster
Interior Wall	: 40mm Sandwich Panel	Exterior Door Paint	: Electrostatic Painted Galvanized Sheet
Exterior Wall	: 40mm Sandwich Panel	Equipment	: TSE Certified Kitchen and Bathroom
Interior Door	: American Press Door	Furniture	: Laminated MDF countertop
Load Carrying Capacity	: 200 kg/m <sup>2</sup>		



# SG 200 SERIES

## General Technical Specifications

<b>PRODUCTION METHOD</b>	<ul style="list-style-type: none"> <li>☒ Production is being made only by using high quality galvanized steel</li> <li>☒ The main structure is being formed by the C and U profiles which was produced by rollform and hydraulic press machines.</li> <li>☒ All products are being delivered to site unassembled and whole construction is being designed to ensure easy and rapid assembly.</li> </ul>
<b>PACKING SYSTEM</b>	<ul style="list-style-type: none"> <li>☒ Flatpack packing system designed to ship the S&amp;G's container systems. All of the connection details designed using bolts and nuts with special locking mechanism.</li> <li>☒ All components of the container such as wall panels, doors, windows, and electric &amp; sanitary installations are placed inside each flatpack unit.</li> </ul>
<b>LIFTING SYSTEM</b>	<ul style="list-style-type: none"> <li>☒ Containers are designed to lift individually. There are 4 eyebolts are placed on the top of each unit for lifting purposes.</li> <li>☒ Please make sure the eyebolts are assembled correctly and safety ropes are distributed evenly before lifting</li> <li>☒ Containers must be empty before lifting and all job safety measures must be strictly followed</li> <li>☒ PPE must be worn at all times and while the container is lifted no one will remain underneath the unit.</li> </ul>
<b>TECHNICAL FEATURES</b>	<ul style="list-style-type: none"> <li>☒ Chasis Load Capacity : 200 kg/m<sup>2</sup></li> <li>☒ Wind Speed : 80 km/h</li> <li>☒ Snow Load : 80 kg/m<sup>2</sup></li> <li>☒ Earthquake condition : 1st Degree</li> <li>☒ Positioning : The container must be placed on a flat surface</li> </ul>
<b>FLOOR STRUCTURE</b>	<ul style="list-style-type: none"> <li>☒ Method : Specially designed C and U profiles produced using high quality galvanised steel</li> <li>☒ Covering : 14mm thick cement board covered with 2mm thick patterned high traffic vinyl</li> <li>☒ Floor Thermal Conductivity Coefficient : K: 2,97 Kcal/m<sup>2</sup> hC</li> </ul>
<b>WALLS</b>	<ul style="list-style-type: none"> <li>☒ Total External Height : 2700 mm</li> <li>☒ Interior Net Height : 2500 mm</li> <li>☒ Thickness : 40 mm</li> <li>☒ Insulation : Polyurethane 40m<sup>3</sup></li> <li>☒ External Surface Covering : Ral 9002 painted 0,30 mm thick corrugated steel sheet</li> <li>☒ Internal Surface Covering : Ral 9002 painted 0,30 mm thick corrugated steel sheet</li> <li>☒ Thermal conductivity coefficient: K: 0,58 Kcal/m<sup>2</sup>hC</li> </ul>
<b>ROOF CHASIS</b>	<ul style="list-style-type: none"> <li>☒ Roof Thermal conductivity coefficient : K: 0,47 Kcal/m<sup>2</sup>hC</li> <li>☒ Roof Construction : Specially designed C and U profiles produced using high quality galvanised steel</li> <li>☒ Roof Covering : 40 mm thick, 3 ribs Sandwich Panel</li> <li>☒ Panel Outer Surface : RAL 9002 painted Galvanized steel sheet</li> <li>☒ Panel Inner Surface : RAL 9002 painted Galvanized steel sheet</li> <li>☒ Insulation : Polyurethane 40 kg/m<sup>3</sup></li> <li>☒ Rain waters are evacuated by the holes in the top frame</li> </ul>
<b>EXTERNAL DOOR</b>	<ul style="list-style-type: none"> <li>☒ Description : RAL9002 painted Galvanized steel sheet industrial door</li> <li>☒ Insulation : EPS</li> <li>☒ Dimensions : 880x1960mm Steel Chasis thickness is 1,2 mm</li> <li>☒ Door lock &amp; Handle : Cylinder type lock, Handle is grey color, TSE certified</li> </ul>
<b>WINDOWS</b>	<ul style="list-style-type: none"> <li>☒ External Windows : 1000x1000 mm Double glazed PVC</li> <li>☒ External Windows Handles : PVC</li> </ul>
<b>ELECTRIC INSTALLATION</b>	<ul style="list-style-type: none"> <li>☒ Method : On the plaster</li> <li>☒ Plug and Switches : TSE Certified, Located in every room</li> <li>☒ Lighting : LED lightnings, TSE Certified</li> <li>☒ Cables : TSE Certified, Located in every room</li> </ul>
<b>SANITARY INSTALLATION</b>	<ul style="list-style-type: none"> <li>☒ Method : On the plaster</li> <li>☒ Toilet Bowls : TSE Certified Ceramic toilet bowls with PVC flush tank</li> <li>☒ Handwashing Basin : TSE Certified Ceramic Handwash basin</li> <li>☒ Pipes : TSE Certified PVC clear and grey water piping system</li> <li>☒ Shower Tray : Fiberglass specially designed square shower tray</li> <li>☒ Fixtures : TSE Certified Fixtures</li> </ul>
<b>NOTES</b>	<ul style="list-style-type: none"> <li>☒ S&amp;G Prefab keeps the right to change the specs</li> </ul>

## SG PREFABRİK MODÜLER YAPI SİS. SAN. VE TİC. LTD. ŞTİ

**Merkez | Head Office** : Küçükbakkalköy Mh. Derebey Sk.  
Dumankaya Flex Residence No:13/50  
Ataşehir / İstanbul / Türkiye

**Fabrika | Factory** : Çevrik Mh. 162. Sk. Sermed Sit. No:7  
Cumayeri / Düzce / Türkiye

sgprefab.com | +90 216 510 23 20 | info@sgprefab.com

