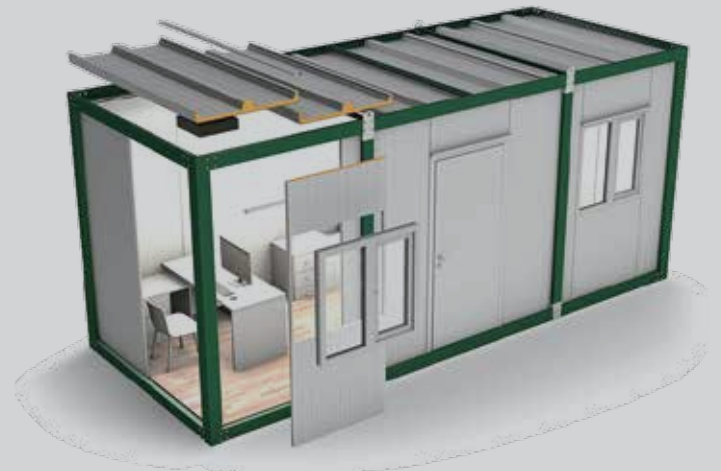


Building Future with Nature in Mind.

Smart & Green Prefabrik Moduler Yapı San. ve Tic. Ltd. Şti.

SG200 SERIES

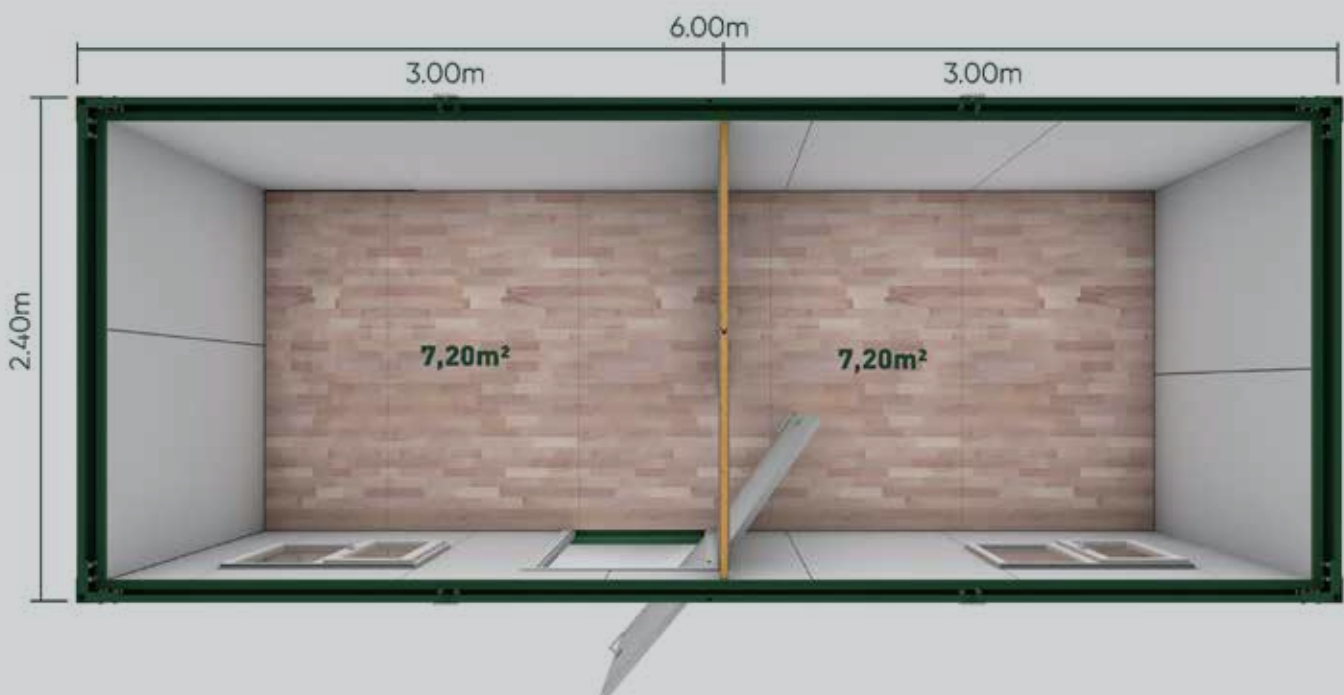
2,40 x 6,00m
Life Containers



SG 202

Technical Specifications

Length	: 6.00m	Plumbing	: Above the Plaster
Width	: 2.40m	Exterior Door	: Insulated Sheet Door
Height	: 2.60m	Windows	: White Color PVC Window
Total Area	: 14.4m ²	Electrical Installation	: Above the Plaster
Interior Wall	: 40mm Sandwich Panel	Exterior Door Paint	: Electrostatic Painted Galvanized Sheet
Exterior Wall	: 40mm Sandwich Panel	Load Carrying Capacity	: 200 kg/m ²
Interior Door	: American Press Door		



SG 200 SERIES

General Technical Specifications

PRODUCTION METHOD	<ul style="list-style-type: none"> ☒ Production is being made only by using high quality galvanized steel ☒ The main structure is being formed by the C and U profiles which was produced by rollform and hydraulic press machines. ☒ All products are being delivered to site unassembled and whole construction is being designed to ensure easy and rapid assembly.
PACKING SYSTEM	<ul style="list-style-type: none"> ☒ Flatpack packing system designed to ship the S&G's container systems. All of the connection details designed using bolts and nuts with special locking mechanism. ☒ All components of the container such as wall panels, doors, windows, and electric & sanitary installations are placed inside each flatpack unit.
LIFTING SYSTEM	<ul style="list-style-type: none"> ☒ Containers are designed to lift individually. There are 4 eyebolts are placed on the top of each unit for lifting purposes. ☒ Please make sure the eyebolts are assembled correctly and safety ropes are distributed evenly before lifting ☒ Containers must be empty before lifting and all job safety measures must be strictly followed ☒ PPE must be worn at all times and while the container is lifted no one will remain underneath the unit.
TECHNICAL FEATURES	<ul style="list-style-type: none"> ☒ Chasis Load Capacity : 200 kg/m² ☒ Wind Speed : 80 km/h ☒ Snow Load : 80 kg/m² ☒ Earthquake condition : 1st Degree ☒ Positioning : The container must be placed on a flat surface
FLOOR STRUCTURE	<ul style="list-style-type: none"> ☒ Method : Specially designed C and U profiles produced using high quality galvanised steel ☒ Covering : 14mm thick cement board covered with 2mm thick patterned high traffic vinyl ☒ Floor Thermal Conductivity Coefficient : K: 2,97 Kcal/m² hC
WALLS	<ul style="list-style-type: none"> ☒ Total External Height : 2700 mm ☒ Interior Net Height : 2500 mm ☒ Thickness : 40 mm ☒ Insulation : Polyurethane 40m³ ☒ External Surface Covering : Ral 9002 painted 0,30 mm thick corrugated steel sheet ☒ Internal Surface Covering : Ral 9002 painted 0,30 mm thick corrugated steel sheet ☒ Thermal conductivity coefficient: K: 0,58 Kcal/m²hC
ROOF CHASIS	<ul style="list-style-type: none"> ☒ Roof Thermal conductivity coefficient : K: 0,47 Kcal/m²hC ☒ Roof Construction : Specially designed C and U profiles produced using high quality galvanised steel ☒ Roof Covering : 40 mm thick, 3 ribs Sandwich Panel ☒ Panel Outer Surface : RAL 9002 painted Galvanized steel sheet ☒ Panel Inner Surface : RAL 9002 painted Galvanized steel sheet ☒ Insulation : Polyurethane 40 kg/m³ ☒ Rain waters are evacuated by the holes in the top frame
EXTERNAL DOOR	<ul style="list-style-type: none"> ☒ Description : RAL9002 painted Galvanized steel sheet industrial door ☒ Insulation : EPS ☒ Dimensions : 880x1960mm Steel Chasis thickness is 1,2 mm ☒ Door lock & Handle : Cylinder type lock, Handle is grey color, TSE certified
WINDOWS	<ul style="list-style-type: none"> ☒ External Windows : 1000x1000 mm Double glazed PVC ☒ External Windows Handles : PVC
ELECTRIC INSTALLATION	<ul style="list-style-type: none"> ☒ Method : On the plaster ☒ Plug and Switches : TSE Certified, Located in every room ☒ Lighting : LED lightnings, TSE Certified ☒ Cables : TSE Certified, Located in every room
SANITARY INSTALLATION	<ul style="list-style-type: none"> ☒ Method : On the plaster ☒ Toilet Bowls : TSE Certified Ceramic toilet bowls with PVC flush tank ☒ Handwashing Basin : TSE Certified Ceramic Handwash basin ☒ Pipes : TSE Certified PVC clear and grey water piping system ☒ Shower Tray : Fiberglass specially designed square shower tray ☒ Fixtures : TSE Certified Fixtures
NOTES	<ul style="list-style-type: none"> ☒ S&G Prefab keeps the right to change the specs

SG PREFABRİK MODÜLER YAPI SİS. SAN. VE TİC. LTD. ŞTİ

Merkez | Head Office : Küçükbakkalköy Mh. Derebey Sk.
Dumankaya Flex Residence No:13/50
Ataşehir / İstanbul / Türkiye

Fabrika | Factory : Çevrik Mh. 162. Sk. Sermed Sit. No:7
Cumayeri / Düzce / Türkiye

sgprefab.com | +90 216 510 23 20 | info@sgprefab.com

